



2024 ORGANIC SEED GUIDE



CORN • SOYBEANS • ALFALFA

The best of Blue River and Viking organic, now combined to form a new, stronger Blue River organic seed.



BLUE RIVER ORGANIC SEED CORN

BLUE RIVER 99-79P

76-DAY CRM

VIGOR, TEST WEIGHT, PERFORMANCE

- Excellent emergence and early vigor for fast canopy
- Proven field-tested genetics with excellent dual-purpose capabilities for grain or silage
- Slower drying dense grain with high test weight
- Best performance in zone or farther north as a later hybrid; avoid moving south for early production or replant



BLUE RIVER 21L90P

85-DAY CRM

SUPERIOR SILAGE & DIGESTIBILITY

- Leafy-floury, silage-specific hybrid with more leaves and more digestible stalks; not intended for use as a grain hybrid
- Very slow dry-down for an extended silage harvest window
- Large, soft kernels for improved digestion
- Planting population is 28,000 to 30,000 for optimum silage yield



NEW BLUE RIVER 24-82P

82-DAY CRM

NEXT STEP UP

- Brand new genetics in its maturity
- Solid emergence and early vigor lead to strong season-long plant health
- Strong tolerance to Goss's Wilt, NCLB and Anthracnose
- Excellent stalks and roots for impressive late season intactness
- Best performance in zone, but can move south as an early maturity option or replant
- Place on medium-heavy soils for optimum yield potential



BLUE RIVER 58-85UP/P

85-DAY CRM

EXCELLENT YIELD POTENTIAL

- Best performance in zone
- Slightly earlier single-cross version of Viking O.45-88P
- Very good ear flex for varied populations with above average test weight
- Medium-tall plant; good dual-purpose potential for grain or silage
- Has made Grain Millers' list of accepted hybrids

AVAILABLE AS



Carl Gaudian (right), Regional Sales Manager for the Northern Region, on a field visit at Fitzgerald Organics in Hutchinson, MN



BLUE RIVER 45-88P

88-DAY CRM

VERSATILE AND WIDELY ADAPTED

- Versatile, widely adapted with good yield potential
- Early flowering hybrid with excellent grain test weight
- Healthy, moves south for late planting better than Viking O.58-85
- Strong emergence and early-season growth
- Semi-flex ear, strongest yields at med to high pop.
- Good dual-purpose potential for grain or silage, especially in the north



BLUE RIVER 34K79P

93-DAY CRM

CONSISTENT PERFORMANCE

- Similar characteristics to Blue River 30K84
- Wider area of adaptation; can move both north and south
- Showy hybrid with late-season plant and stalk health
- Consistent yields; best performance at higher populations



BLUE RIVER 22K32P

89-DAY CRM

WIDELY ADAPTED, SOLID AGRONOMICS

- High yielding hybrid that moves south of zone
- Excellent stalks and roots with above average ear height
- Superior plant health; excellent late-season intactness
- Average grain quality and test weight can be expected



BLUE RIVER 62-93UP/P

93-DAY CRM

SHOWY PLANT ALL SEASON LONG

- Excellent fall intactness allows for a wide harvest window
- Girthy, semi-flex ears show good response to a range of planting populations
- Strong agronomics, including excellent emergence and early season vigor
- Good adaptation moving south, with best performance in zone and north on medium to heavy soils



BLUE RIVER 52-89UP/P

89-DAY CRM

SOLID PERFORMER

- Best performance from I-29 and east with strong yield in the north
- Excellent overall plant health and good choice for late or replant south of zone
- Outstanding tolerance to Goss's Wilt
- Strong emergence and early vigor, leading to very good stalks and roots
- Late season intactness and staygreen allows for a wide harvest window



BLUE RIVER 84-95UP

95-DAY CRM

BEST-SELLING 95-DAY ORGANIC GRAIN HYBRID

- Medium-height hybrid; very good stalk and root strength
- Good overall plant health and very good test weight
- Very good drought tolerance; with strong tolerance to high pH soils
- Best yield performance at medium to high populations
- Customers report this is a fine choice for hand-picking
- On Grain Millers' list of accepted hybrids



BLUE RIVER 30K84P

90-DAY CRM

TOUGH HYBRID

- Very healthy hybrid with great overall disease tolerance
- Great agronomics with excellent end-season integrity
- Fixed-ear hybrid that does very well in high populations
- Should be kept in its maturity zone



BLUE RIVER 52-96P

96-DAY CRM

TOUGH HYBRID WITH HIGHER YIELDS

- More yield than O.84-95UP in multiple years of testing, especially on heavier ground
- Good foliar disease resistance, with outstanding anthracnose stalk rot resistance
- Tough hybrid with excellent stalk and root strength
- Exhibits exceptional drought tolerance
- Related to our O.84-95UP



Overall, our corn yield was up 25% this past year. Finding bin space is a good problem to have.

- LUCKEY, OH -



BLUE RIVER ORGANIC SEED CORN

BLUE RIVER 45-97UP 97-DAY CRM

EXCELLENT EMERGENCE & TOP-END YIELD



- Exciting yield potential; a good complement to Viking O.84-95UP
- Vigorous, healthy, medium-tall plant; good drought tol.
- Very good stalk and root strength
- Widely adapted from I-29 across the eastern US; good north-south movement
- Semi-flex ear with very good test weight, fast drydown

BLUE RIVER 38M23P 98-DAY CRM

FAST DRYDOWN, GRAIN HYBRID



- Moderate height plant with moderate ear placement
- Excellent grain quality
- Above-average root strength
- Average late-season plant health and intactness
- Best placed on medium to heavy soils,

BLUE RIVER 42C87P 98-DAY CRM

GRAIN OR SILAGE: SOLID PERFORMANCE



- “Racehorse” yield potential with great seedling vigor
- Fixed ear hybrid that performs best at higher populations
- Excellent staygreen and fall integrity
- Good choice as a dual-purpose grain or silage hybrid

BLUE RIVER 43L96P 98-DAY CRM

SUPERIOR SILAGE & DIGESTIBILITY



- Leafy-floury silage-specific hybrid with more leaves and more digestible stalks; not intended for use as a grain hybrid
- Very slow drydown for an extended silage harvest window
- Large, soft kernels for improved digestion
- Planting population is 28,000–30,000 for optimum silage

BLUE RIVER 85-00P 100-DAY CRM

EXCELLENT WORKHORSE 100-DAY



- Consistently good yield performance
- Related to Viking O.84-95UP
- Excellent drought tolerance; well adapted across SD and northern NE even on high pH soils
- Healthy plant with above average tolerance to Tar Spot; suited for planting across the Corn Belt
- Strong stalks and roots; great intactness

NEW BLUE RIVER 24-01P 101-DAY CRM

TAR SPOT KING



- Consistent good health across locations
- Good all-around disease tolerance, including high tolerance to Tar Spot
- Excellent emergence and early season vigor
- Strong adaptation east to west with good southern movement as an early hybrid
- Best performance on medium to heavy soils

BLUE RIVER 48G35P 102-DAY CRM

OUTSTANDING GRAIN OR SILAGE



- Tall plant with great emergence and excellent tonnage
- Outstanding plant health; wide harvest window for silage
- Starchy grain with great digestibility
- Excellent movement east to west; south (as early hybrid)
- Good yield as grain hybrid; average test weight
- Bred specifically for consistent performance on organic farms; same hybrid as Viking O.69-01P

BLUE RIVER 46-02P 102-DAY CRM

CONSISTENT STRONG YIELD



- Widely adapted from central NE to NY
- Strong emergence; excellent disease tol.
- Semi-flex ear with very good test weight
- Very good stalks and roots
- Medium-tall healthy plant with good fall intactness

BLUE RIVER 49M23P 103-DAY CRM

TOP-END YIELD POTENTIAL



- The choice for top-end grain yield potential or outstanding silage
- Strong emergence and early vigor
- Excellent stalks and late-season intactness
- Widely adapted east to west, north to south
- Performs best under high fertility and well-drained soils



The 18-06UP, I really like this corn. It's running 15% moisture and 60-pound test weight. On the light, sandy-gravelly areas, it's averaging 180, but where it's heavier soils, it's doing 225, easy.

– MESERVEY, IA –



BLUE RIVER 84-04P 104-DAY CRM

EXCELLENT HIGH QUALITY YIELD POTENTIAL

- Excellent yields of high quality grain
- Exhibits a girthy, semi-flex ear with high test weight grain
- Good plant health, with high tolerance to Goss's Wilt and Tar Spot
- Medium-tall hybrid with strong stalk and roots
- Best positioned in the central Corn Belt and east on medium-heavy soils



BLUE RIVER 54C27P 105-DAY CRM

SHORTER STATURE, HIGH YIELD

- Good overall agronomics with very good emergence
- Great overall plant health
- Semi-flex ear that performs best in high populations
- Medium plant height with good fall integrity



BLUE RIVER 51T59P 104-DAY CRM

TALL, SHOWY, CONSISTENT

- Tall plant with racehorse yield potential
- Moves well east to west and south of zone
- Good Goss's Wilt tolerance
- Good fall integrity and staygreen



BLUE RIVER 54PM37 105-DAY CRM

TOP-END GRAIN QUALITY

- "Racehorse" yield potential that moves south of zone
- Excellent seedling vigor and early season canopy
- Great disease resistance and stress tolerance
- Semi-flex ear; excellent staygreen and fall integrity
- On Grain Millers' list of accepted hybrids



BLUE RIVER 51-04P 104-DAY CRM

PROVEN PERFORMANCE FOR GRAIN & SILAGE

- Very good yielding, stable hybrid for organic fields
- Outstanding digestibility and tonnage ratings for silage; superior choice for a dual-purpose hybrid
- Good late-season health, strong roots, and above average height
- Best performance on medium to heavy soils with good fertility



BLUE RIVER 18-06UP 106-DAY CRM

SHOWY GRAIN HYBRID

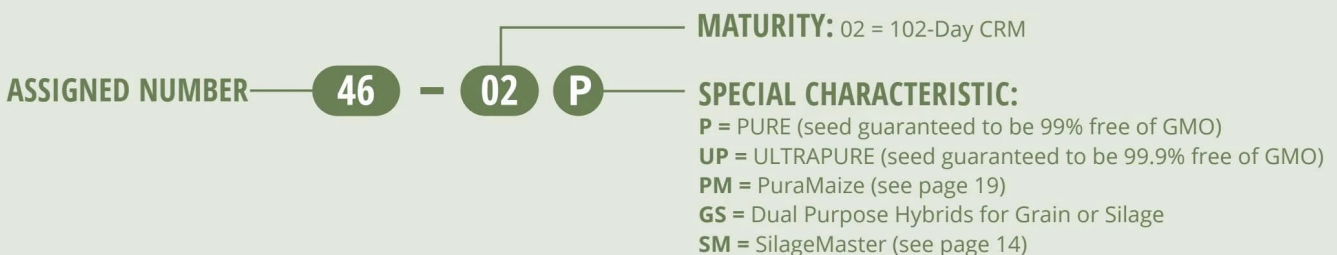
- Impressive grain yields in the central and western Corn Belt, with very good drydown
- Medium-height plant with very good emergence
- Strong stalks and roots
- Good fall intactness allows for a wide harvest window
- Above-average test weight and grain quality; on Grain Miller's list of accepted hybrids



WHAT'S IN A NAME?

You can still find familiar Blue River hybrids under their existing names (e.g. 49M23, 62G22).

Hybrids in this catalog that are powered by Viking and being added to the Blue River lineup, as well as any new hybrids moving forward, will be named according to the following numbering system.





BLUE RIVER ORGANIC SEED CORN

BLUE RIVER 57A30P 107-DAY CRM

PROVEN PERFORMANCE, YEAR-AFTER-YEAR



- A consistent Blue River top-seller and performer
- “Racehorse” potential in high fertility environments
- Great emergence and seedling vigor; performs well across soil types
- Taller plant with semi-flex ears and faster drydown

BLUE RIVER 48-08P 108-DAY CRM

OUTSTANDING YIELD AND AGRONOMICS



- Outstanding yields, both grain and silage
- Excellent emergence and response to high populations and intensive management
- Excellent tolerance to Goss’s Wilt, NCLB, and GLS
- Strong roots and stalks
- Good ear flex and defense for tougher environments

NEW BLUE RIVER 85-09P 109-DAY CRM

ONE WE’VE BEEN WAITING FOR



- Strong yield performance and excellent grain quality
- Widely adapted hybrid east to west
- Excellent disease tolerance to Goss’s Wilt, NCLB, and GLS
- Strong stalks, with great late season intactness
- Semi-flex ear, with high test weight grain

BLUE RIVER 60PM11 109-DAY CRM

SOLID, CONSISTENT PERFORMER



- Solid “workhorse” performance
- Tall plant with flex ear
- Widely used throughout the US to prevent GMO contamination (GE & color)
- Consistent yields with fast fall drydown

BLUE RIVER 62G22P 110-DAY CRM

EXCELLENT YIELDS, YEAR-AFTER-YEAR



- Historically a top-seller; widely adapted
- “Racehorse” yield potential with great early season canopy development
- Taller plant with good ear flex; could use as a dual-purpose grain or silage hybrid
- Great late-season integrity with faster drydown

BLUE RIVER 64K93P 111-DAY CRM

THE UP AND COMER



- Great overall agronomics with good emergence
- Great overall disease tolerance
- Semi-flex ear that does well in high and low populations
- Best in high fertility environments

BLUE RIVER 66G25P 112-DAY CRM

SOUTHERN STATES FAVORITE



- Can be moved south of zone; performs well at high populations
- Widely adapted
- Excellent root and stalk integrity with broad disease resistance/tolerance
- Excellent fall integrity and staygreen

BLUE RIVER 66PM19 112-DAY CRM

EXCEPTIONAL YIELD PERFORMANCE



- Exceptional yield performance
- PuraMaize variety with large ears and medium-tall height
- Performs well at higher populations; can be moved south
- Excellent root and stalk strength, fall integrity and staygreen

BLUE RIVER 68C37P 113-DAY CRM

ATTRACTIVE, CONSISTENT PERFORMANCE



- Excellent root strength and seedling emergence
- Very good overall disease tolerance
- Semi-flex hybrid that does well in high and low populations
- Best in high fertility environments

BLUE RIVER 71PM50 114-DAY CRM

EXCELLENT GRAIN QUALITY



- Food-grade potential combined with PuraMaize pollen blocking ability
- Slower fall drydown,
- Taller plant with semi-flex ears
- Good root and stalk integrity



BLUE RIVER 82-14P 114-DAY CRM

TREMENDOUS YIELDS FOR GRAIN OR SILAGE



- Tropical genetics; well adapted to southern Corn Belt
- Grain and silage yields competing with best available conventional hybrids
- Medium-tall hybrid with above-average emergence
- Girthy, flex ears and very good disease tolerance

BLUE RIVER 75K84P 116-DAY CRM

EXCELLENT LATE-SEASON PERFORMER



- Handles southern heat well
- Good overall plant health
- Good emergence with quick canopy development
- Good heat and drought tolerance with faster drydown

CLOSEOUT CORN

Save on organic hybrids that are being discontinued and on certain lots of our most popular hybrids that contain extra-large or extra-small seed.

No returns; all sales final. Germination tested January 2024 with minimum of 93% warm, 85% cold.

\$195 BLUE RIVER 87-80 80-DAY CRM

GDU'S TO BL	PLANT POP	# BAGS	BAG WT	SIZE
2000	Medium	57	35-37#	SF

\$195 BLUE RIVER 23-82 82-DAY CRM

GDU'S TO BL	PLANT POP	# BAGS	BAG WT	SIZE
2050	Med-High	100+	39#	SF

\$195 BLUE RIVER 98-91UP 91-DAY CRM

GDU'S TO BL	PLANT POP	# BAGS	BAG WT	SIZE
2290	Low-High	37	38-46#	MF, SF

\$195 BLUE RIVER 98-98 98-DAY CRM

GDU'S TO BL	PLANT POP	# BAGS	BAG WT	SIZE
2490	Med-High	68	39#	SF

INTRODUCING

RISEUP SEED TREATMENT

All Blue River Organic and Viking Non-GMO corn for organic farmers will be coated with RiseUp, our label for organic-compliant seed treatments that promote strong emergence, early vigor, and robust development that leads to highly productive plants.

For the 2024 planting season, the following treatments could be on your RiseUp-treated corn:

SOILBIOTICS® SEED START 200

SoilBiotics® Seed Start 200 is a humic acid seed treatment combined with a blend of living, breathing microorganisms. This humic acid improves cold germination and seedling emergence and vigor. The biological factor in Seed Start 200 has an all-around positive effect on the growth rate, immunity of the seedling to biotic and abiotic stress, the development of the root system and its microbiome, and therefore its ability to assimilate nutrients.

SABREX™ ROOT INOCULANT

SabrEx Root Inoculant is a proprietary blend of trichoderma and mycorrhizal fungi that aids in plant rooting, nutrient and water uptake.

SOILBIOTICS® 1R

SoilBiotics® 1R is a humic acid product derived from mined Leonardite. It is formulated to improve nutrient uptake, provide better root development, and reduce plant stress.

The combination of treatments cannot be ordered or specified in advance. It is dependent on the location and timing of the seed cleaning and treatment process.





BLUE RIVER ORGANIC SEED CORN

GENERAL INFO

HYBRID	CRM	GDU'S TO BLACK LAYER	PLANTING SOUTH OF ZONE	FOOD GRADE POTENTIAL	PLANTING POP.	HIGH POP. TOL.	EAR TYPE	EMERGENCE	ROOT STRENGTH	FALL STALK STRENGTH
Blue River 99-79P	79	1940	No		M-H	7	Semi-Flex	8	7	7
Blue River 24-82P NEW	82	2050	Yes	No	M-H	7	Flex	8	8	7
Blue River 21L90P	85	2100	Yes	No	L-M	7	Semi-Flex	9	8	7
Blue River 58-85P/UP	85	2140	No	Yes	M-H	8	Flex	7	8	7
Blue River 45-88P	88	2190	Yes	No	M-H	8	Flex	8	8	7
Blue River 22K32P	89	2140	No	No	M-H	8	Flex	8	8	8
Blue River 52-89P/UP	89	2230	Yes	No	M-H	8	Semi-Flex	8	8	8
Blue River 30K84P	90	2240	No	No	H	9	Fixed	8	8	8
Blue River 34K79P	93	2250	Yes	No	H	9	Fixed	8	7	8
Blue River 62-93P/UP	93	2320	Yes	No	M-H	9	Semi-Flex	8	8	8
Blue River 84-95UP	95	2450	Yes	Yes	M-H	9	Semi-Fix	7	9	8
Blue River 52-96P	96	2460	Yes	No	M-H	8	Semi-Flex	7	8	8
Blue River 45-97UP	97	2470	Yes	No	M-H	8	Semi-Flex	8	8	8
Blue River 38M23P	98	2465	No	No	H	9	Fixed	7	8	7
Blue River 42C87P	98	2470	Yes	No	M-H	9	Semi-Fix	8	7	6
Blue River 43L96P	98	2470	Yes	No	L-M	7	Semi-Flex	8	8	8
Blue River 85-00P	100	2500	Yes	No	M-H	8	Semi-Flex	8	8	8
Blue River 24-01P NEW	101	2510	Yes	No	M-H	8	Semi-Flex	8	7	8
Blue River 48G35P	102	2510	Yes	No	M-H	8	Flex	8	7	8
Blue River 46-02P	102	2530	Yes	No	M-H	8	Semi-Flex	7	8	8
Blue River 49M23P	103	2540	Yes	No	M-H	8	Semi-Fix	8	8	8
Blue River 84-04P	104	2575	Yes	No	M-H	9	Semi-Flex	8	7	8
Blue River 51T59P	104	2610	Yes	No	M-H	8	Flex	7	7	7
Blue River 51-04P	104	2600	Yes	No	M-H	8	Flex	7	8	7
Blue River 54C27P	105	2610	Yes	No	M-H	8	Semi-Flex	8	8	7
Blue River 54PM37	105	2620	Yes	Yes	H	9	Semi-Flex	9	8	8
Blue River 18-06UP	106	2620	Yes	Yes	M-H	8	Semi-Fix	8	8	8
Blue River 57A30P	107	2630	No	No	M-H	8	Semi-Flex	8	8	7
Blue River 48-08P	108	2650	Yes	No	M-H	8	Flex	8	9	8
Blue River 85-09P NEW	109	2620	Yes	No	M-H	8	Semi-Flex	8	7	8
Blue River 60PM11	109	2620	No	No	M-H	8	Flex	8	8	7
Blue River 62G22P	110	2640	No	No	M-H	8	Flex	8	8	8
Blue River 64K93P	111	2660	No	No	M-H	8	Semi-Flex	8	8	7
Blue River 66G25P	112	2810	Yes	No	M-H	8	Semi-Flex	7	9	8
Blue River 66PM19	112	2800	Yes	No	M-H	8	Semi-Flex	7	9	8
Blue River 68C37P	113	2800	Yes	No	M-H	8	Semi-Flex	9	7	7
Blue River 71PM50	114	2820	Yes	Yes	M	7	Semi-Flex	7	8	7
Blue River 82-14P	114	2855	Yes	No	L-H	7	Flex	8	7	8
Blue River 75K84P	116	2870	Yes	No	H	9	Semi-Flex	7	7	7

PERFORMANCE



AGRONOMIC INFO					PLANT HEALTH & DISEASE TOLERANCE							
PLANT HEIGHT	TEST WEIGHT	DRYDOWN	SILAGE POTENTIAL	COB COLOR	DROUGHT	NCLB	SCLB	GOSS'S WILT	TAR SPOT	GRAY LEAF SPOT	COMMON RUST	GREEN SNAP
8	8	6	8	White	7	7	ID	7	ID	7	7	7
8	6	7	7	Pink	8	8	ID	8	ID	7	ID	7
9	6	5	9	Red	7	8	ID	7	ID	8	8	ID
7	8	7	7	Pink	8	7	ID	7	ID	7	7	8
8	8	8	8	Red	7	7	ID	7	ID	8	8	8
7	7	7	6	Red	7	7	8	ID	ID	6	7	ID
7	7	7	7	Red	7	7	ID	8	7	7	7	7
8	8	8	6	Red	7	8	8	ID	6	8	7	ID
7	7	7	6	Red	7	7	8	ID	6	7	8	ID
8	7	7	7	Red	7	7	ID	7	6	8	7	8
7	8	8	6	Red	8	7	7	8	7	ID	8	9
7	8	7	6	Red	8	8	9	8	7	7	9	8
8	8	7	7	Red	8	8	9	7	7	7	7	9
8	8	8	8	Red	8	7	7	6	6	6	ID	ID
8	8	7	9	Red	7	7	8	ID	ID	7	8	ID
9	6	5	9	White	8	ID	ID	8	ID	6	7	ID
7	6	8	6	Red	8	8	9	9	8	7	9	9
8	6	7	8	Red	7	7	7	7	9	8	7	8
8	7	7	9	Red	7	7	7	6	7	7	7	7
8	8	7	7	Red	7	8	9	9	7	7	8	9
8	8	8	8	Red	7	8	7	8	7	7	ID	7
8	9	8	8	Red	7	7	ID	9	8	8	ID	8
8	8	7	7	Red	7	8	8	8	ID	7	7	ID
8	7	8	9	Pink	7	7	7	9	8	7	7	7
7	7	7	7	Red	7	8	8	ID	ID	6	8	ID
7	8	7	6	Red	8	8	8	8	ID	8	7	ID
7	8	8	7	Red	8	8	9	9	7	8	9	9
9	7	8	7	Red	8	8	7	8	ID	8	ID	ID
8	7	6	9	Red	8	9	8	9	7	8	8	8
8	9	6	8	Red	7	8	7	7	7	9	7	8
8	7	8	7	Pink	8	7	7	7	ID	7	8	ID
8	8	8	8	Pink	8	7	7	7	ID	7	8	7
8	7	7	7	Red	8	8	8	ID	ID	7	8	7
8	8	6	7	Red	7	7	8	8	ID	8	8	ID
8	8	6	7	Red	7	7	8	8	ID	8	8	ID
8	7	8	6	Red	8	8	8	ID	ID	7	8	ID
8	8	7	6	Red	8	8	8	7	ID	7	8	ID
9	7	6	9	Red	8	8	8	8	8	8	8	7
9	7	8	6	Pink	8	7	8	ID	ID	8	7	ID

High Population Tolerance, Agronomic Info, Plant Health & Disease Tolerance: 10 = best, 1 = poorest, ID = Insufficient Data

TO ORDER

CALL 800.370.7979 OR VISIT ALSEED.COM/BLUERIVER



VIKING NON-GMO SEED CORN

THESE NON-GMO HYBRIDS ARE COATED WITH RISEUP ORGANIC-COMPLIANT SEED TREATMENT

VIKING 68-86P (RISEUP TREATED) 86-DAY CRM

EXCELLENT YIELD & DROUGHT TOLERANCE

- Outstanding drought tolerance on a variety of soil types
- Excellent root and stalk strength for harvest flexibility
- Medium-tall plant; widely adapted across northern Corn Belt
- Great late-season plant health
- Moves south as a late plant or re-plant option



VIKING 51-95UP (RISEUP TREATED) 95-DAY CRM

BEST-SELLING 95-DAY GRAIN HYBRID

- Medium-height hybrid; very good stalk and root strength
- Good overall plant health and very good test weight
- Very good drought tolerance; with strong tolerance to high pH soils
- Best yield performance at medium to high populations
- Customers report this is a fine choice for hand-picking



VIKING 42-92P (RISEUP TREATED) 92-DAY CRM

PROVEN PERFORMANCE FOR GRAIN OR SILAGE

- Six years of outstanding performance in yield trials and on farms
- Impressive yield across varying soil types, populations, and environmental conditions
- Strong stalks and roots enable harvest flexibility
- Excellent seedling vigor; moves south well
- Medium-tall plant performs well as a dual-purpose silage hybrid



NEW VIKING 24-99P (RISEUP TREATED) 99-DAY CRM

HELPING TO BATTLE TAR SPOT

- Strong, consistent performance across all locations in 2022
- Outstanding disease resistance to NCLB, Goss's Wilt, GLS, and Tar Spot
- Fast emergence and strong early vigor
- Excellent agronomics, including strong stalks and roots
- Only watch-out is on light ground with no irrigation



GENERAL INFO										
HYBRID	CRM	GDU'S TO BLACK LAYER	PLANTING SOUTH OF ZONE	FOOD GRADE POTENTIAL	PLANTING POP.	HIGH POP. TOL.	EAR TYPE	EMERGENCE	ROOT STRENGTH	FALL STALK STRENGTH
Viking 68-86P	86	2180	Yes	No	M-H	8	Semi-Flex	8	8	8
Viking 42-92P	92	2260	Yes	No	M-H	8	Semi-Flex	8	8	8
Viking 51-95UP	95	2350	Yes	Yes	M-H	9	Semi-Fix	7	9	8
Viking 24-99P NEW	99	2450	No	No	M-H	9	Semi-Fix	8	8	8
Viking 46-02P	102	2530	Yes	No	M-H	8	Semi-Flex	7	8	8
Viking 84-04P	104	2575	Yes	No	M-H	9	Semi-Flex	8	7	8
Viking 48-08P	107	NA	Yes	No	L-M	NA	Flex	8	8	7
Viking 85-09P	108	2650	Yes	No	M-H	8	Flex	8	9	8
Viking 24SM07 NEW	109	2620	Yes	No	M-H	8	Semi-Flex	8	7	8
Viking 24SM15 NEW	115	NA	Yes	No	L-M	NA	Flex	8	8	7

HYBRIDS AND PERFORMANCE



VIKING 46-02P (RISEUP TREATED) 102-DAY CRM

CONSISTENT STRONG YIELD

- Widely adapted from central NE to NY
- Strong emergence and excellent disease tolerance
- Semi-flex ear with very good test weight
- Very good stalks and roots
- Medium-tall healthy plant with good fall intactness



VIKING 85-09P (RISEUP TREATED) 109-DAY CRM

ONE WE'VE BEEN WAITING FOR

- Strong yield performance and excellent grain quality
- Widely adapted hybrid east to west
- Excellent disease tolerance to Goss's Wilt, NCLB, and GLS
- Strong stalks, with great late season intactness
- Semi-flex ear, with high test weight grain



VIKING 84-04P (RISEUP TREATED) 104-DAY CRM

EXCELLENT HIGH QUALITY YIELD POTENTIAL

- Excellent yields of high quality grain
- Exhibits a girthy, semi-flex ear with high test weight grain
- Good plant health; high tol. to Goss's Wilt and Tar Spot
- Medium-tall hybrid with strong stalk and roots
- Best positioned in the central Corn Belt and east on medium-heavy soils



NEW VIKING 24SM07 (RISEUP TREATED) 107-DAY CRM

INTRODUCING SILAGEMASTER HYBRIDS

- Bred with silage production in mind, with top-end tonnage and quality
- Adapted as a silage hybrid from PA to FL, and west as far as I-29
- Strong agronomic package, adapted to a wide range of environments
- Good emergence and seedling vigor
- Healthy plant with great scores against Tar Spot and GLS

VIKING 48-08P (RISEUP TREATED) 108-DAY CRM

OUTSTANDING YIELD AND AGRONOMICS

- Outstanding yields, both grain and silage
- Excellent emergence and response to high populations and intensive management
- Excellent tolerance to Goss's Wilt, NCLB, and GLS
- Strong roots and stalks
- Good ear flex and defense for tougher environments



NEW VIKING 24SM15 (RISEUP TREATED) 115-DAY CRM

INTRODUCING SILAGEMASTER HYBRIDS

- Bred with silage production in mind, with top-end tonnage and quality
- Widely adapted from WI to TX, CA to NY
- Outstanding plant health, with high tolerance to Tar Spot and GLS
- Strong, fast emergence and seedling vigor for quick canopy

AGRONOMIC INFO					PLANT HEALTH & DISEASE TOLERANCE							
PLANT HEIGHT	TEST WEIGHT	DRYDOWN	SILAGE POTENTIAL	COB COLOR	DROUGHT	NCLB	SCLB	GOSS'S WILT	TAR SPOT	GRAY LEAF SPOT	COMMON RUST	GREEN SNAP
7	8	7	8	Red	9	8	ID	8	ID	ID	8	8
8	8	7	9	Red	8	8	ID	7	7	7	8	8
7	8	8	6	Red	8	7	7	8	7	ID	8	9
8	7	7	9	Red	7	8	ID	8	8	8	ID	8
8	8	7	7	Red	7	8	9	9	7	7	8	9
8	9	8	8	Red	7	7	ID	9	8	8	ID	8
8	NA	NA	10	Pink	7	ID	ID	ID	8	8	ID	7
8	7	6	9	Red	8	9	8	9	7	8	8	8
8	9	6	8	Red	7	8	7	7	7	9	7	8
9	NA	NA	10	Pink	8	ID	7	ID	8	8	8	7

High Population Tolerance, Agronomic Info, Plant Health & Disease Tolerance: 10 = best, 1 = poorest, ID = Insufficient Data



INTRODUCING

SILAGEMASTER

HYBRIDS

**“The best corn hybrid is not the best silage hybrid.
The best silage hybrid is the best silage hybrid.”**

WHAT ARE SILAGEMASTER HYBRIDS?

SilageMaster Hybrids are specifically bred to be the highest-tonnage, best quality silage hybrids you can plant. When managed correctly they will not only maximize forage production per acre, they will also produce more milk or more animal gain per acre than leafy, BMR, or regular grain-silage hybrids.

WHERE DID SILAGEMASTER HYBRIDS COME FROM?

SilageMaster Hybrids are the result of a multi-year corn breeding project focused on breeding and selecting corn germplasm to produce large ears with highly digestible grain on tall, dense, syrupy stalks. Every SilageMaster hybrid we launch has been thoroughly tested for tonnage and analyzed for quality in a lab. But much more importantly, they have been tested as silage on-farm, through actual dairy cows. We will only release a SilageMaster hybrid after extensive testing for tonnage, silage quality, agronomic performance, and on-farm performance.

HOW ARE SILAGEMASTER HYBRIDS DIFFERENT?

SilageMaster Hybrids have thick, sugary, dense, good-standing stalks and large ears with highly-digestible grain. Their peak performance for silage will be at a harvest population of 30,000 plants (a lower population than typical for grain/silage hybrids). The thick, good-standing stalks allow you to cut your silage closer to the ground, increasing tonnage and getting more of that sugary stalk to your cows! Those syrupy stalks also increase fiber digestibility. The higher sugars in the stalks and leaves also mean less dry matter loss during fermentation. And finally, the soft, starchy grain on the large ears improves the grain digestibility, improving animal performance.

MANAGEMENT OF SILAGEMASTER HYBRIDS

1. Lower your planting populations. We know, seedsmen never tell you to do this, but to optimize the stalk circumference and performance of SilageMaster hybrids, plant at 30-32,000 seeds/acre. This will save you money on seed, but more importantly give you better silage. The optimum harvest population is 30,000 plants/acre.
2. Increase the chop length of your silage. Don't worry, they sugary stalks will work their magic at a slightly longer length, and you'll have less dry matter loss.

WHAT SILAGEMASTER HYBRIDS ARE AVAILABLE?

This year, we are only offering two (see below). They are both conventionally-grown and will be treated with organically-compliant biologicals. We will be launching additional hybrids in the coming years, and we fully intend to have Certified Organic seed available for 2025.

NEW **VIKING 24SM07 (RISEUP TREATED) 107-DAY CRM**

- Conventional, Non-GMO
- Bred for silage production, with top-end tonnage and quality
- Adapted as a silage hybrid from PA to FL, and west as far as I-29
- Strong agronomic package, adapted to wide range of environments
- Good emergence and seedling vigor
- Healthy plant with great scores against Tar Spot and GLS

NEW **VIKING 24SM15 (RISEUP TREATED) 115-DAY CRM**

- Conventional, Non-GMO
- Bred for silage production, with top-end tonnage and quality
- Widely adapted from WI to TX, CA to NY
- Outstanding plant health; high tolerance to Tar Spot and GLS
- Strong, fast emergence and seedling vigor for quick canopy

CORN RESEARCH DEDICATED TO ORGANIC FARMERS

As an organic farmer, you don't just need seed that is produced organically, you need products selected and developed to thrive under the unique challenges faced in organic production systems.

Blue River organic seed and Albert Lea Seed, along with our research partners, have a program dedicated to breeding, identifying, and trialing non-GMO inbreds and hybrids for organic farmers.

Last winter we had a nursery in Chile making crosses, testing seed, and advancing the PuraMaize program (see page 19). This summer we have 92 replicated research trials (including pre-commercial, hybrid development, and hybrid screening trials). These trials are located from North Dakota to Missouri, and from Nebraska to Virginia. The goal of all of our research is to develop hybrids that are specifically suited to non-GMO and organic farming systems.

When you see "new" products in our catalog, just know these labels are hard earned.



Corn and soybean product manager Jake Hansen (right) and Bruce Voss checking planting depth at a soybean test plot in Ormsby, MN



Researchers planting pre-commercial test plots of Non-GMO corn in Kelley, IA

TO ORDER

CALL 800.370.7979 OR VISIT [ALSEED.COM/BLUERIVER](https://www.alseed.com/blueriver)

ORGANIC & NON-GMO

DUAL-PURPOSE

GRAIN/SILAGE HYBRIDS

Grain hybrids that also produce excellent quality & tonnage for silage

HYBRID COMPARISON	TRIAL INFO	CRM	DM TONS	% DM	NDF	MILK/TON	MILK/ACRE
Viking 42-92P	2022 UW Silage	92	8.8	35.9	65	3,300	29,100
DenBesten DB31-90		90	7.1	35.7	63	3,240	23,100
Blue River 62-93UP	2022 UW Silage	93	9.3	32.5	65	3,200	30,000
Dairyland HiDF-4037Q		100	9.5	32.5	68	3,190	30,300
Blue River 42C87	2021 Replicated Trial	98	8.97	31.2	58	3,635	32,599
Commercial Silage Check		101	7.47	30.34	56.9	3,505	26,387
Blue River 24-01	2022 Replicated Trial	101	11	34.7	63.8	3,729	39,616
Pioneer P0075Q		100	9.95	33.9	60.2	3,325	34,245
Blue River 48G35/O.69-01	2022 UW Silage	102	9.1	32.3	64	3,410	31,100
Dairyland DB-4311AMXT		103	7.9	32.8	67	3,350	26,700
Blue River 84-04P	6 Locations 2022	104	9	33.5	59.9	3,803	34,188
Pioneer P0075Q		100	8.7	31.7	60.1	3,774	32,637
Blue River 51-04P	2022 UW Silage	104	10.2	34.9	62	3,480	35,300
Dairyland DS-4510Q		105	9.7	33.2	62	3,390	32,900
Blue River 57A30	2021 Replicated Trial	107	8.25	30.6	58.8	3,679	30,361
Commercial Silage Check		109	8.95	31.1	57.8	3,582	32,070
Blue River 48-08P	2022 UW Silage	108	9.7	31.9	57	3,280	31,800
Prairie Hybrids 5281		110	9.2	32.4	61	3,440	31,700
Blue River 85-09P	14 Locations 2021-22	109	9.2	36.7	56.5	3,587	32,843
Pioneer P1185AM		111	8.1	34.7	60.5	3,739	30,157
Blue River 62G22	2021 Replicated Trial	110	9.21	30.3	59.1	3,691	33,997
Commercial Silage Check		109	8.25	31.1	57.8	3,582	32,070
Blue River 82-14P	2022 UW Silage	114	10.3	28.7	60	3,130	32,500
Dairyland DB-5211AMXT		112	9.5	29	65	3,260	31,100
Blue River 75K84	2021 Replicated Trial	116	9.6	31.3	58.2	3,489	33,339
Commercial Silage Check		113	8.83	31.1	56.9	3,542	31,464

VIKING 42-92P (RISEUP TREATED) 92-DAY CRM

- Conventional, Non-GMO
- Six years of outstanding performance in yield trials and on farms
- Impressive yield across varying soil types, populations, and environmental conditions
- Strong stalks and roots enable harvest flexibility
- Excellent seedling vigor; moves south well
- Medium-tall plant performs well as a dual-purpose silage hybrid

BLUE RIVER 62-93UP/P 93-DAY CRM

- Excellent fall intactness allows for a wide harvest window
- Girthy, semi-flex ears show good response to a range of planting populations
- Strong agronomics, including excellent emergence and early season vigor
- Good adaptation moving south, with best performance in zone and north on medium to heavy soils

BLUE RIVER 42C87 98-DAY CRM

- “Racehorse” yield potential with great seedling vigor
- Fixed ear hybrid that performs best at higher populations
- Excellent staygreen and fall integrity
- Good choice as a dual-purpose grain or silage hybrid

NEW BLUE RIVER 24-01P 101-DAY CRM

- Consistent good health across locations
- Good all-around disease tolerance, including high tolerance to Tar Spot
- Excellent emergence and early season vigor
- Strong adaptation east to west with good southern movement as an early hybrid
- Best performance on medium to heavy soils

BLUE RIVER 48G35P 102-DAY CRM

- Tall plant with great emergence and excellent tonnage
- Outstanding plant health; wide harvest window for silage
- Starchy grain with great digestibility
- Excellent east to west movement; able to move south as an early hybrid
- Good yield performance as a grain hybrid; average test weight
- Bred specifically for consistent performance on organic farms; same hybrid as Viking O.69-01P

BLUE RIVER 84-04P 104-DAY CRM

- Excellent yields of high quality grain
- Exhibits a girthy, semi-flex ear with high test weight grain
- Good plant health, with high tolerance to Goss's Wilt and Tar Spot
- Medium-tall hybrid with strong stalk and roots
- Best positioned in the central Corn Belt and east on medium-heavy soils

BLUE RIVER 51-04P 104-DAY CRM

- Very good yielding, stable hybrid for organic fields
- Outstanding digestibility and tonnage ratings for silage; superior choice for a dual-purpose hybrid
- Good late-season health, strong roots, and above average height
- Best performance on medium to heavy soils with good fertility

BLUE RIVER 57A30P 107-DAY CRM

- A consistent Blue River top-seller and performer
- “Racehorse” potential in high fertility environments
- Great emergence and seedling vigor; performs well across soil types
- Taller plant with semi-flex ears and faster drydown

BLUE RIVER 48-08P 108-DAY CRM

- Outstanding yields, both grain and silage
- Excellent emergence and response to high populations and intensive management
- Excellent tolerance to Goss's Wilt, NCLB, and GLS
- Strong roots and stalks
- Good ear flex and defense for tougher environments

NEW BLUE RIVER 85-09P 109-DAY CRM

- Strong yield performance and excellent grain quality
- Widely adapted hybrid east to west
- Excellent disease tolerance to Goss's Wilt, NCLB, and GLS
- Strong stalks, with great late season intactness
- Semi-flex ear, with high test weight grain

BLUE RIVER 62G22P 110-DAY CRM

- Historically a top-seller; widely adapted
- “Racehorse” yield potential with great early season canopy development
- Taller plant with good ear flex; could use as a dual-purpose grain or silage hybrid
- Great late-season integrity with faster drydown

BLUE RIVER 82-14P 114-DAY CRM

- Tropical genetics; well adapted to southern Corn Belt
- Grain and silage yields competing with best available conventional hybrids
- Medium-tall hybrid with above-average emergence
- Girthy, flex ears and very good disease tolerance

BLUE RIVER 75K84P 116-DAY CRM

- Handles southern heat well
- Good overall plant health
- Good emergence with quick canopy development
- Good heat and drought tolerance with faster drydown



ORGANIC CORN HYBRIDS WITH PURAMAIZE GENE BLOCKING SYSTEM

Not for test plots! Because PuraMaize hybrids can only be pollinated by their own pollen, they should not be trialed in 4- or 8-row strip plots. Call 800.370.7979 for more information.

WHAT IS PURAMAIZE?

PuraMaize is a hybrid corn just like all Blue River corn varieties. However, it has one very important advantage: the PuraMaize gene blocking system.

Developed through traditional selective breeding, the PuraMaize gene-blocking system obstructs GMO corn cross pollination contamination. Simply put, PuraMaize prefers its own pollen over the pollen of neighboring corn hybrids that do not contain PuraMaize.

If PuraMaize pollen is present during the pollination window, all non-PuraMaize pollen is rejected, including GMO, Gene Edited and CRISPR pollen.

WHY IS THIS IMPORTANT?

The PuraMaize line strengthens the ability of organic growers to continue to farm organically without worrying about pollen drift from their conventional neighbors' corn fields. An added benefit is that organic growers will no longer delay planting, widening their window for corn grain production.

BLUE RIVER 54PM37 105-DAY CRM

- "Racehorse" yield potential that moves south of zone
- Excellent seedling vigor and early season canopy
- Great disease resistance and stress tolerance
- Semi-flex ear; excellent staygreen and fall integrity
- On Grain Millers' list of accepted hybrids

BLUE RIVER 60PM11 109-DAY CRM

- Solid "workhorse" performance
- Tall plant with flex ear
- Widely used throughout the US to prevent GMO contamination (GE & color)
- Consistent yields with fast fall drydown

BLUE RIVER 66PM19 112-DAY CRM

- Exceptional yield performance
- PuraMaize variety with large ears and medium-tall height
- Performs well at higher populations; can be moved south
- Excellent root and stalk strength, fall integrity and staygreen

BLUE RIVER 71PMS0 114-DAY CRM

- Food-grade potential combined with PuraMaize pollen blocking ability
- Slower fall drydown,
- Taller plant with semi-flex ears
- Good root and stalk integrity

THE PUREST SEED ON THE MARKET, PLAIN AND SIMPLE.



PURE

ULTRAPURE

99%
NON-GMO
GUARANTEED


BLUE RIVER
ORGANIC SEED


BLUE RIVER
ORGANIC SEED

99.9%
NON-GMO
GUARANTEED

Seed not marked with P or UP has no genetic purity guarantee.
We cannot guarantee the genetic purity of grain produced from any seed sold in this catalog.

TO ORDER

CALL 800.370.7979 OR VISIT ALSEED.COM/BLUERIVER



BLUE RIVER ORGANIC SOYBEAN SEED

BLUE RIVER 0821N

0.8 RM

VERY HIGH YIELDS, GREAT SOUTHERN MOVEMENT

- High-yielding early maturity variety
- Keeps its plant height and bushiness moving south of zone (for late or re-plant)
- Great emergence and standability
- Good cyst nematode resistant bean with strong IDC tolerance
- Same as Blue River 07DC8



BLUE RIVER 12A2

1.2 RM

BACK BY POPULAR DEMAND

- Very good emergence and excellent standability
- Good overall plant health
- Consistent yield leader over multiple years
- Excellent heat and drought tolerance



BLUE RIVER 1202N

1.2 RM

BUSHY, HIGH-YIELDING; GOOD DEFENSE

- 69 bu/a, 2-yr avg, U of WI North Central trial
- Good high yields on a defensive bean
- Rps1k gene for Phytophthora, PI88788 gene for cyst nematodes
- Good standing and bushy plant type makes this bean competitive with weeds



NEW BLUE RIVER 14Y4A

1.4 RM

YELLOW HILUM, APHID RESISTANCE

- Rag 2 gene for aphid tolerance
- Competitive yields in mid-group 1 zones
- Above average protein
- Good growth once out of the ground with good standability



Tyler Franzenburg, farmer and Blue River dealer, in his field of Blue River 2155N soybeans in Dysart, IA

0.8-2.1 RM VARIETIES



BLUE RIVER 1518N

1.5 RM

OUTSTANDING YIELDS & AGRONOMICS

- Strong yield performance; 71 bu/a, 2-yr avg, U of WI North Central trial
- Medium-stature, bushy bean that works well in wide rows
- Widely adapted and moves south well as an early bean
- Strong emergence and standability
- Good all-around defensive characteristics



BLUE RIVER E1993N

1.9 RM

FARM FAVORITE

- Selected for performance on organic farms with excellent 2-year performance in our organic soybean trials
- Medium-bush plant, well adapted to wide rows and organic production
- Excellent standing
- Strong defensive characteristics; resistant to SCN, BSR, PRR



BLUE RIVER 1718N

1.7 RM

EARLY ELITE GENETICS

- Excellent standing, with good branching capability
- Great emergence leading to excellent yield performance
- Outstanding defensive characteristics including tolerance to white mold, brown stem rot, and IDC
- Widely adapted with consistent performance across years and locations



IAS19C3**

1.9 RM

YELLOW HILUM, FOOD-GRADE

- Newer genetics out of Iowa State with a yellow hilum
- Stronger emergence and early growth
- Excellent standability all season long
- Outstanding yield performance, competing with some of the best genetics on the market
- License required before seed delivery (see below)



VIRTUE V1821

1.8 RM

YELLOW HILUM, HIGH YIELDS

- Strong yield performance across a wide range of environments
- Excellent emergence and standability
- Good disease tolerance to white mold, sudden death syndrome, and IDC
- PI88788 gene for cyst nematode protection



VIRTUE V2122

2.1 RM

VERSATILE SOYBEAN ACROSS LOCATIONS

- Widely adapted, versatile soybean from east to west
- Medium-tall, medium-bushy plant
- Strong disease package with high tolerance to white mold, sudden death syndrome, and IDC
- Excellent yield performance, 62 bu/a in 2022 (6-location avg)



NEW BLUE RIVER 19B4A

1.9 RM

RAG 2 APHID RESISTANCE

- Direct replacement for the old Viking O.1955AT adding 3 bushels on average
- Medium-tall plant with good standability
- Rps1a gene for solid Phytophthora tolerance
- Good emergence and early growth helping with fast canopy closure



BLUE RIVER 2155N

2.1 RM

CONSISTENT YIELDS, TOP-SELLER

- Tremendous top-end yield potential across a wide planning area
- Good defensive package/tolerance to IDC, Phytophthora, and BSR
- Cyst nematode resistance (PI88788)
- Well adapted across the early Group 2 maturity zone
- Has matured similar to a 2.2-2.3 RM; same as Blue River 22DC6



****LICENSE REQUIRED** — IAS19C3, 2188AT12N, IA3054RA12: These varieties originate from germplasm that is intellectual property of Iowa State University and requires the seed purchaser to sign a license agreement. Seeds must be used for the sole purpose of producing a single crop and not saved for replanting.



BLUE RIVER ORGANIC SOYBEAN SEED

BLUE RIVER 2244A

2.2 RM

STACKED APHID TOLERANCE

- Rag 1 & 2 aphid tolerance genetics
- High yield potential, solid performance for maturity
- Very good standing, attractive at harvest time
- Cyst resistant with very good IDC tolerance



BLUE RIVER 2418N

2.4 RM

HIGH YIELDS & SOUND AGRONOMICS

- Very high yielding with excellent performance in trials from MN to OH
- Widely adapted across the Midwest
- Good standing, medium-bush plant
- Rps1k gene for excellent Phytophthora protection



BLUE RIVER 2188A12N**

2.5 RM

A "WHOLE PACKAGE" YELLOW HILUM SOYBEAN

- Consistent high yields on farms and in trials
- Accepted food soybean, often meets 42% protein contracts
- Stacked Rag 1 & 2 aphid-tolerant genetics
- Cyst-resistant (PI88788) soybean with good tolerance to IDC
- Medium-tall plant suited for wide rows, can lean before harvest
- License required before seed delivery (see below)



BLUE RIVER 2702

2.7 RM

WIDELY ADAPTED, OUTSTANDING YIELDS

- Medium-tall variety with good standability
- Strong yield performance across locations
- Fast emergence and bushy plant type help fill wide rows faster
- Proven from NE and east in 2.5-3.0 RM zone



IA3054RA12**

2.8 RM

YELLOW HILUM, VERY HIGH PROTEIN

- Widely accepted in the food industry and very marketable; will routinely make 42% contracts
- Stacked Rag 1 & 2 aphid-tolerant genetics
- Very good yields
- Shorter and better standing than Viking O.2188AT
- License required before seed delivery (see below)



BLUE RIVER 29DC5

2.9 RM

EXCELLENT YIELD PERFORMANCE

- Excellent emergence and early season growth
- Medium-bushy bean; good standability to close a row
- Very good disease resistance and overall plant health
- Solid performance in late group 2 and early group 3 maturity zones



NEW BLUE RIVER 30B4

3.0 RM

NEW AND IMPROVED

- Top-end yields, beating Viking O.3118N by 3.5 bushels across 24 locations
- Strong emergence and early growth; excellent standability
- Good defensive package including high scores against PRR, IDC, and SDS
- Widely adapted east to west; strong southern movement



BLUE RIVER 34A7

3.4 RM

A TOP-SELLER

- Excellent multi-year performance
- Medium-bushy plant that forms a good canopy to close wide rows
- Excellent heat and drought tolerance
- Good standability allows for a wider harvest window



****LICENSE REQUIRED** — IAS19C3, 2188AT12N, IA3054RA12: These varieties originate from germplasm that is intellectual property of Iowa State University and requires the seed purchaser to sign a license agreement. Seeds must be used for the sole purpose of producing a single crop and not saved for replanting.



I want to make sure you keep producing the 34A7! That has been a great bean for us. It is really fast to canopy, which is huge and has excellent drought tolerance. It is like they will just sit there and wait and wait for a rain, and then you get one in August, and, bam, they just start shooting the pods out.

— NEWBURG, PA —

2.2-4.2 RM VARIETIES



BLUE RIVER 3418N

3.4 RM

WIDELY ADAPTED ACROSS ENVIRONMENTS

- Stable yields from low-high yield environments moving east to west from IN to NE
- Strong emergence and standability
- Good resistance to sudden death syndrome and Phytophthora root rot
- Excellent stress tolerance

PURE

99% NON-GMO

NEW BLUE RIVER 35Y4

3.5 RM

YELLOW HILUM

- Replaces Blue River 35F2, with more yield
- Adapted to a wide range of soil types and environments
- Good season-long health leads to an attractive harvest look
- Excellent standability

ULTRAPURE

99.9% NON-GMO

NEW

BLUE RIVER 39R4

3.9 RM

NEW MUST HAVE SOYBEAN

- Strong new genetics with high yield potential
- Excellent overall plant health and stress tolerance
- Medium-tall, bushy plants can make short work of filling a 30" row
- Equipped with STS excluder high tolerance to salty soils

PURE

99% NON-GMO

NEW

BLUE RIVER 42D40

4.2 RM

FRESH OUT OF THE GATE

- Very high yield potential (out-yielding V4122S)
- Medium-tall, medium-bush plant style
- Good standing, black hilum
- Rps1a for Phytophthora tolerance
- PI88788 for cyst nematode resistance

PURE

99% NON-GMO



Paul Mugge cultivating organic IA3054RA12 soybeans at his farm in Sutherland, IA

TO ORDER

CALL 800.370.7979 OR VISIT ALSEED.COM/BLUERIVER



BLUE RIVER ORGANIC SOYBEAN SEED

VIRTUE V4520S

4.5 RM

GOOD DEFENSIVE BEAN

- Strongest performance on medium to heavy soil types
- Consistently out-yields conventional and traited soybean checks
- Medium-height, medium bushy plant
- A defensive style variety with good emergence and good standing
- Resistant to Stem Canker



VIRTUE V5422S

5.4 RM

DEFENSIVE BEAN WITH YIELD

- Excellent performance in the southern US with proven performance in NC, SC, and GA
- Strong defensive characteristics and plant health
- Medium-tall plant that stands well, even on poorer soils
- Very strong emergence
- Resistant to Stem Canker



VIRTUE V4921S

4.9 RM

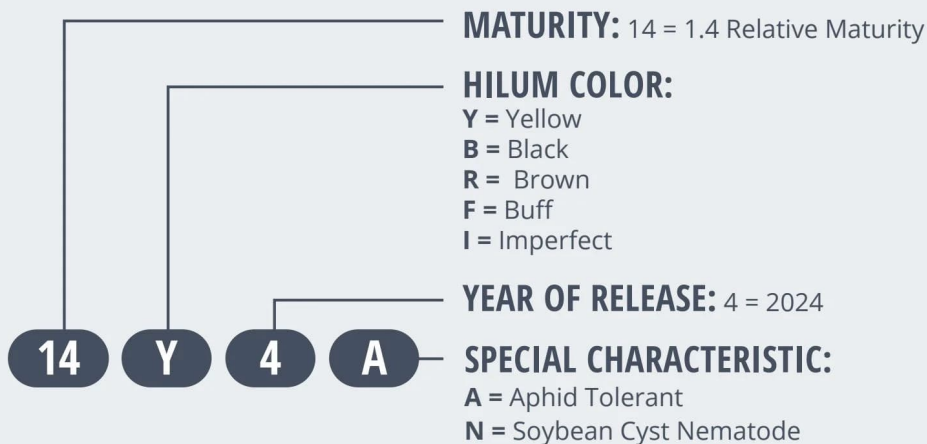
70 BUSHELS ACROSS 23 LOCATIONS (2022)

- Medium-tall plant with excellent standability
- Outstanding yield potential in the late group 4 maturity zone
- Healthy plants with a good disease package
- Best performance on medium to high yield environments
- Salt Index Excluder for high-salt environments



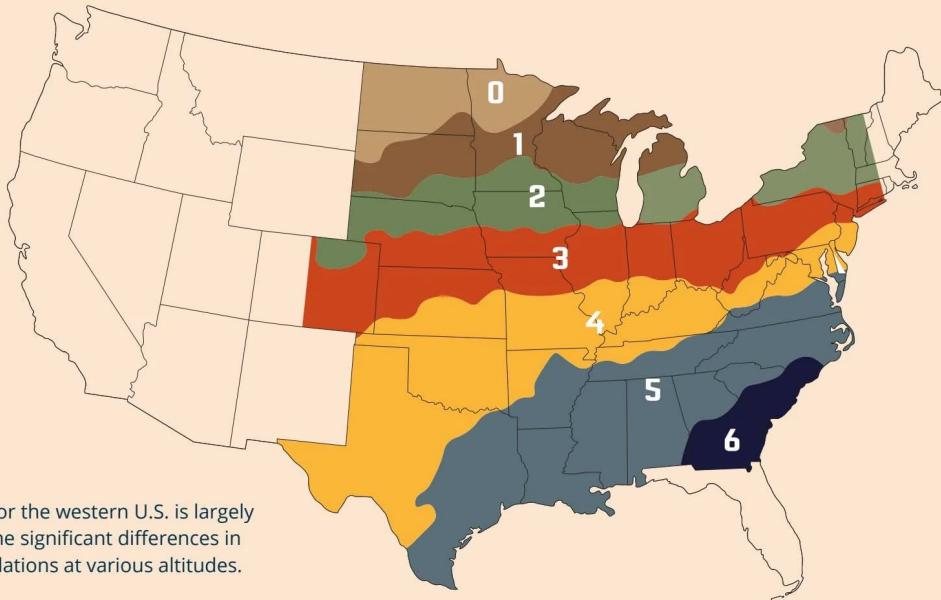
WHAT'S IN A NAME?

You can still find familiar Blue River soybean varieties under their existing names (e.g. 12A2, 34A7). Varieties that are powered by Viking and being added to the Blue River lineup can also be found under their existing names (e.g. 1718N, 2244AT). New Blue River varieties featured in this catalog, as well as any new varieties going forward, will be named according to the numbering system below. Select soybean varieties we carry from other originators (e.g. Virtue, ISU) will carry the number assigned to them by their originator (e.g. V4921S, IA3054RA12, e1993).





SOYBEAN MATURITY GROUP ZONE MAP



Note: Reliable data for the western U.S. is largely unavailable due to the significant differences in planting recommendations at various altitudes.



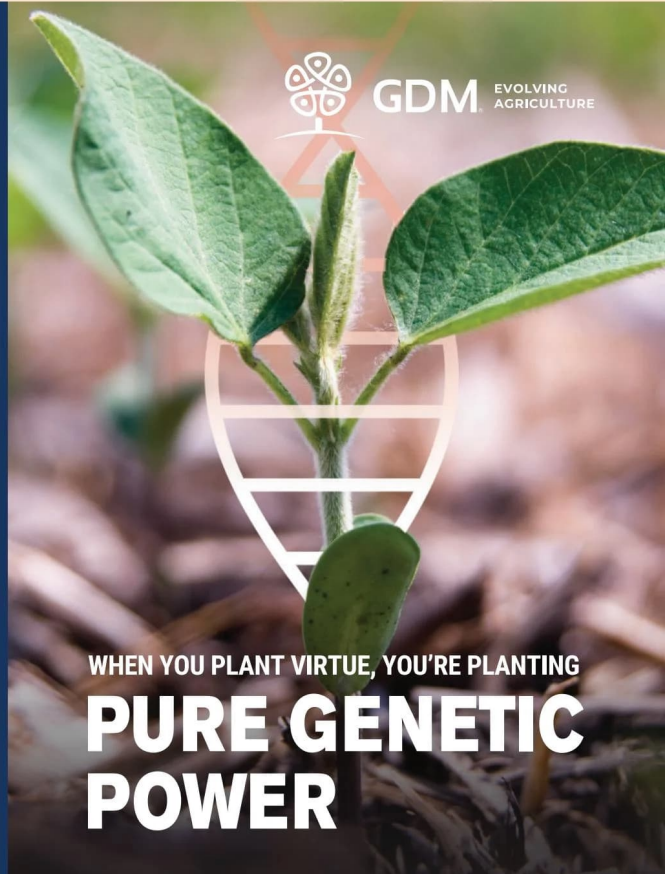
VIRTUE SEEDS IS EXCITED TO PARTNER WITH

BLUE RIVER ORGANIC SEED

TO BRING NEW GENETICS TO THEIR ORGANIC GROWERS.

GDM COMES TO THE U.S. WITH 40 YEARS OF GLOBAL EXPERIENCE, A COMMITMENT TO GENETIC DIVERSITY, AND BRINGS A UNIQUE OPPORTUNITY TO U.S. FARMERS. AFTER OVER A DECADE OF BREEDING AND TESTING EFFORTS IN THE U.S., GDM LAUNCHED VIRTUE SEEDS, A BRAND SOLELY DEDICATED TO HIGH-YIELDING, NON-GMO SOYBEAN VARIETIES.

VIRTUE SEEDS IS DERIVED FROM ONE OF THE WORLD'S LARGEST NON-GMO GERMPASM BANKS. THESE EXCLUSIVE VARIETIES ARE TESTED IN DIVERSE ENVIRONMENTS TO BRING YOU THE BEST AGRONOMIC RECOMMENDATIONS FOR YOUR FARM.



WHEN YOU PLANT VIRTUE, YOU'RE PLANTING
**PURE GENETIC
 POWER**



BLUE RIVER ORGANIC SOYBEAN SEED

GENERAL & AGRONOMIC INFO

VARIETY	RM	SEEDS PER UNIT	PLANT TYPE	PLANT HEIGHT	HILUM COLOR	PROTEIN	GRAIN USE	EMERGENCE	EARLY GROWTH
Blue River 0821N	0.8	140,000	Med-Bush	Medium	Brown	Avg.	Feed	8	8
Blue River 1202N	1.2	140,000	Med-Bush	Medium	Brown	Above Avg	Feed	7	7
Blue River 12A2	1.2	140,000	Med-Bush	Medium	Black	Avg.	Feed	8	8
Blue River 14Y4A** NEW	1.4	110,000	Medium	Medium	Yellow	High	Feed/Food	6	7
Blue River 1518N	1.5	140,000	Medium	Medium	Black	Avg.	Feed	8	8
Blue River 1718N	1.7	140,000	Medium	Medium	Brown	Avg.	Feed	8	8
Blue River 1700N**	1.7	110,000	Med-Bush	Medium	Yellow	High	Feed/Food	6	7
Virtue V1821**	1.8	140,000	Medium	Medium	Yellow	Avg.	Food/Feed	8	7
Blue River 19B4A NEW	1.9	140,000	Medium	Med-Tall	Black	Avg.	Feed	7	7
Blue River e1993	1.9	140,000	Med-Bush	Medium	Imp-Black	Avg.	Feed	7	7
IAS19C3**	1.9	110,000	Medium	Medium	Yellow	Above Avg	Food	7	7
Virtue V2122	2.1	140,000	Medium	Medium	Brown	Avg.	Feed	7	7
Blue River 2155N	2.1	140,000	Med-Bush	Med-Tall	Brown	Avg.	Feed	8	8
Blue River 2244A	2.2	140,000	Medium	Medium	Mixed	Avg.	Feed	6	7
Blue River 2418N	2.4	140,000	Med-Bush	Medium	Black	Avg.	Feed	8	8
Blue River 2188A12N**	2.5	140,000	Med-Bush	Med-Tall	Yellow	Above Avg	Food/Feed	6	6
Blue River 2702	2.7	140,000	Bushy	Med-Tall	Brown	Avg.	Feed	7	7
IA3054RA12**	2.8	110,000	Medium	Medium	Yellow	High+	Food	5	6
Blue River 29DC5	2.9	140,000	Med-Bush	Medium	Black	Avg.	Feed	8	8
Blue River 30B4 NEW	3.0	140,000	Med-Bush	Med-Tall	Black	Avg.	Feed	8	8
Blue River 34A7	3.4	140,000	Med-Bush	Medium	Brown	Above Avg	Feed	7	7
Blue River 3418N	3.4	140,000	Med-Bush	Med-Tall	Brown	Avg.	Feed	8	8
Blue River 35Y4** NEW	3.5	110,000	Medium	Medium	Yellow	Above Avg	Feed/Food	7	7
Blue River 39R4 NEW	3.9	140,000	Bushy	Med-Tall	Brown	Avg.	Feed	8	8
Blue River 42D40 NEW	4.2	140,000	Medium	Med-Tall	Black	Avg.	Feed	7	7
Virtue V4520S	4.5	140,000	Medium	Medium	Black	Avg.	Feed	7	7
Virtue V4921S	4.9	140,000	Medium	Med-Tall	Black	Avg.	Feed	8	8
Virtue V5422S	5.4	140,000	Medium	Med-Tall	Imp-Black	Avg.	Feed	8	7

*Shatter may vary depending on environmental conditions.

**Soybean varieties with food-grade potential.



			PLANT HEALTH & DISEASE TOLERANCE								
LODGING	HEAT & DROUGHT TOLERANCE	SHATTER*	PHYTO-PHTHORA GENE	PHYTO-PHTHORA TOLERANCE	IDC (IRON DEF. CHLOR.)	BROWN STEM ROT	WHITE MOLD	SUDDEN DEATH SYNDROME	FROGEYE LEAF SPOT	CYST NEMATODE	SOYBEAN APHID RESIST.
7	6	8	None	7	7	6	ID	ID	ID	7	No
7	7	7	Rps1k	8	5	ID	7	6	ID	7	No
8	8	6	None	8	8	8	ID	ID	ID	6	No
7	6	ID	None	ID	6	8	ID	ID	5	6	Yes
8	7	7	None	7	7	7	6	7	ID	7	No
7	7	7	Rps1k	7	7	8	7	ID	ID	7	No
7	6	ID	None	5	6	ID	ID	7	ID	7	No
8	7	8	Rps1c	7	7	ID	7	8	8	7	No
7	ID	8	Rps1a	7	6	8	ID	ID	ID	6	Yes
8	6	7	Rps1k	7	6	5	7	6	ID	7	No
8	ID	7	None	6	6	ID	7	7	ID	7	No
8	6	8	Rps3a	7	8	ID	7	7	7	5	No
7	7	8	None	6	7	8	7	8	ID	7	No
7	6	7	None	ID	7	6	6	6	ID	7	Yes
7	6	7	Rps1c	7	7	7	7	7	ID	7	No
5	5	7	None	5	7	5	5	5	ID	7	Yes
7	7	7	None	5	6	ID	6	6	ID	5	No
7	6	7	None	5	5	ID	ID	ID	ID	4	Yes
7	7	8	ID	7	7	7	ID	7	ID	7	No
7	8	ID	Rps1c	8	7	6	ID	7	ID	7	No
8	8	8	ID	7	6	7	6	7	ID	5	No
8	7	7	Rps1k	7	ID	ID	ID	7	ID	7	No
8	ID	ID	Rps1k	7	7	7	ID	ID	ID	7	No
7	8	ID	Rps1c	8	6	9	ID	7	ID	7	No
8	7	ID	Rps1a	7	6	6	7	8	ID	7	No
7	6	8	Rps1a	7	ID	ID	ID	6	6	5	No
7	6	8	Rps1k	8	ID	ID	ID	6	7	5	No
7	6	8	Rps1a	7	ID	ID	ID	7	7	5	No

Agronomic Info, Plant Health & Disease Tolerance: 1 lowest, 9 highest, ID = Insufficient Data



VIKING NON-GMO SOYBEAN SEED

VIKING NON-GMO 1223N 1.2 RM

BEST IN CLASS

- Direct replacement to Viking 1218N with a 2.5 bushel advantage
- Outstanding yield performance in our trials in 2021-22
- Great southern movement as an early maturity or replant
- Good branching ability to close wide rows well
- Excellent plant health and standability



NON-GMO E24Y002 2.4 RM

YELLOW HILUM, FOOD GRADE

- Replaces Viking 2188AT12 with similar yields and much better standability
- RAG1 gene for aphid tolerance
- Rps1k gene for good phytophthora tolerance and PI88788 for cyst nematode resistance
- Medium-bushy plant type to aid in canopy closure
- 41.8% protein in our 2021 testing



VIKING NON-GMO 2022N 2.0 RM

NEXT LEVEL IN YIELD POTENTIAL

- Direct replacement for Viking 2018N, 4-bushel advantage in our 2021 soybean trials
- Medium-tall, medium-bushy plant
- Good stress and disease tolerance, including Phytophthora, SDS, white mold, and IDC
- Excellent emergence and standability



NEW VIKING NON-GMO 27B4 2.7 RM

FIRST CLASS GENETICS

- Outstanding yield performance across the Midwest and east
- Well-adapted to move south out of zone
- Medium-tall plant with good standability
- Strong disease resistance to SWM, BSR, IDC and Phytophthora



VIKING NON-GMO 2340KN 2.3 RM

PEKING CYST RESISTANCE HAS YOU COVERED

- Ideal for tough cyst nematode acres
- Out-yielded Viking 2155 for 5 years
- Very good IDC score and Peking cyst resistance
- Medium height, bushy plant
- Mixed hilum, average seed size



VARIETY	GENERAL & AGRONOMIC INFO								
	RM	SEEDS PER UNIT	PLANT TYPE	PLANT HEIGHT	HILUM COLOR	PROTEIN	GRAIN USE	EMERGENCE	EARLY GROWTH
Viking Non-GMO 1223N	1.2	140,000	Med-Bush	Medium	Black	Avg.	Feed	8	8
Viking Non-GMO 2022N	2.0	140,000	Med-Bush	Medium	Black	Avg.	Feed	8	8
Viking Non-GMO 2340KN	2.3	140,000	Med-Bush	Medium	Buff	Avg.	Feed	8	8
Non-GMO E24Y002	2.4	140,000	Med-Bush	Medium	Yellow	High	Feed/Food	6	6
Viking Non-GMO 27B4 NEW	2.7	140,000	Medium	Med-Tall	Black	Avg.	Feed	7	7

Agronomic Info, Plant Health & Disease Tolerance: 1 lowest, 9 highest, ID = Insufficient Data

*Shatter may vary depending on environmental conditions.

VARIETIES AND PERFORMANCE



PLANT HEALTH & DISEASE TOLERANCE

LODGING	HEAT & DROUGHT TOLERANCE	SHATTER*	PHYTO-PHTHORA GENE	PHYTO-PHTHORA TOLERANCE	IDC (IRON DEF. CHLOR.)	BROWN STEM ROT	WHITE MOLD	SUDDEN DEATH SYNDROME	FROGEYE LEAF SPOT	CYST NEMATODE	SOYBEAN APHID RESIST.
7	7	ID	None	7	7	6	6	ID	7	No	No
7	7	ID	Rps1k	7	6	6	6	7	7	No	No
7	7	ID	Rps1k	7	7	7	7	7	9	No	No
7	ID	ID	Rps1k	7	5	5	ID	6	7	Yes	Yes
7	7	ID	Rpc1c	7	7	8	7	7	7	No	No

Organic farmers Aaron Butler (middle) and Alex Hopkins (right) checking soybeans with dealer Adam Roberts in Malta, IL

TO ORDER

CALL 800.370.7979 OR VISIT [ALSEED.COM/BLUERIVER](https://www.alseed.com/blueriver)



ORGANIC & NON-GMO ALFALFA SEED

ORGANIC BLUE RIVER 444LH

BEST LEAFHOPPER-RESISTANT ALFALFA

- Best-in-class potato leafhopper resistance
- Outstanding yield and forage quality
- FD 4; suitable for 3 to 4-cut systems
- Strong winter survival in the Upper Midwest
- Excellent disease resistance package
- Available with OMRI-approved seed coating
- Limited availability

ORGANIC BLUE RIVER 320LH/AP

LEAFHOPPER-RESISTANT, FIRST-IN-CLASS DISEASE RATING

- Premium-quality; good resistance to potato leafhoppers
- Aphanomyces race 1 & 2 resistance; strong persistence on wetter soils
- FD 3.2; suitable for 3 to 4-cut system
- High-yielding variety; fast establishment, quick recovery
- Strong winter survival score
- Available with OMRI-approved seed coating
- Limited availability

ORGANIC BLUE RIVER 520AP

HIGH FALL DORMANCY, EXCELLENT DISEASE RESISTANCE

- Very fast recovery, great choice for 4 to 5-cut systems
- Excellent disease resistance (34/35 DRI)
- Great choice for maximum yield on heavy soils
- Very good forage quality; ideal for dairy or beef production
- Available with OMRI-approved seed coating

ORGANIC BLUE RIVER BLUEBIRD LH/AP

LEAFHOPPER-RESISTANT, HIGH-YIELDING

- Highly resistant to potato leafhopper
- Aphanomyces race 1 & 2 resistance; strong persistence on wetter soils
- FD 5; suitable for 3 to 4-cut system
- Available with OMRI-approved seed coating
- Limited availability

ORGANIC BLUE RIVER 372HD

GREAT YIELD AND QUALITY

- Premium quality alfalfa for high milk per acre
- FD 4; suitable for 4 to 5-cut systems
- 30/30 disease resistance index to help maximize the life of the stand and your investment
- Excellent winter hardiness
- Available with OMRI-approved seed coating
- Limited availability

ORGANIC BLUE RIVER 3800

CONSISTENT, VERSATILE, AND HIGH-YIELDING

- Very high-yielding alfalfa with fast recovery
- Excellent quality; well suited for dairy or beef cows
- Very good disease resistance (29/30 DRI)
- FD 4; suitable for 3 to 4-cut systems
- Available with OMRI-approved seed coating



Blue River alfalfa on Eric Ford's farm in Blissfield, MI



ORGANIC BLUE RIVER 340M

HIGH LEAF TO STEM RATIO

- High-quality, multi-leaf alfalfa
- Good all-around disease resistance (27/30 DRI)
- FD 3; suitable for 3 to 4-cut systems
- Good choice for all classes of livestock
- Available with OMRI-approved seed coating

ORGANIC HONEST JOHN

HIGH QUALITY, WITH TRACE OF RED CLOVER

- Good bang for your buck; exceptional quality alfalfa with <5% medium red clover
- A blend of high-yielding, disease-resistant alfalfas with good winter hardiness
- Well-adapted for haylage or dry hay across the Upper Midwest
- Some lots may contain up to 5% red clover (clearly listed on the tag)
- Available with OMRI-approved Inoculant

ORGANIC MATRIX

GRAZING-TYPE ALFALFA WITH GOOD DISEASE RESISTANCE

- Strong yields and high-quality with second-to-none creeping habit (spreads by rhizomes)
- Best for grazing; not recommended for haying
- Good disease resistance for wetter soils (DRI=25/30)
- Begins creeping habit in establishment year
- Available with OMRI-approved Seed Coating

ORGANIC HARDY BRAND

ECONOMICAL CHOICE

- Good fit for short haying rotations on heavy soils or long rotations on drier ground
- Good, inexpensive plowdown option
- Limited disease resistance; avoid wet ground
- Available with OMRI-approved Inoculant



Your alfalfa has really impressed me. I plant it on my organic acres, right next to my conventional neighbor's, and it nearly always grows faster and is darker green than theirs.

- HUDSON, NY -

ORGANIC ALFALFA SEED PRODUCTION UPDATE

Our commitment to organic alfalfa seed is stronger than ever, and there is positive outlook on high quality organic alfalfa seed with leaffhopper resistance (LH) or that is highly digestible (HD). More organic alfalfa seed production acres are planted than ever before, and we expect greater productivity and seed output for the 2025 planting season. Look forward to stronger organic alfalfa availability of varieties like 374HD, 394HD, Roadrunner, Red Falcon, Finch, and Bluebird! Featured in our current lineup is conventional Viking 374HD, Viking 394AP, and Viking 342LH. Though not certified organic, these are premium non-GMO varieties with organic compliant seed coatings and inoculants. When organic seed becomes limited, ask us about using these varieties on organic farms.

CONVENTIONAL VIKING 374HD

HIGHEST COMBINATION OF YIELD AND QUALITY

- The highest quality alfalfa we sell for a 4- or 5-cut system (FD4.0)
- Yielded 141% of the check in Cornell's 2022 forage trial, and 123% of check for 3-yr total
- Viking 374HD is the next generation of 372HD, winner of the 2022 Forage Super Bowl!
- Lignin levels comparable to other highly digestible varieties
- Aphanomyces race 1 & 2 resistance and branch root trait = strong persistence and productivity on wetter soils
- Available with OMRI-approved seed coating

CONVENTIONAL VIKING 394AP

MAXIMIZE YIELD ON EVERY INCH OF EVERY FIELD

- Yielded 141% of the check in Cornell's 2022 forage trial, and 125% of check for 3-yr total
- Best disease resistance available, including Aphanomyces Races 1, 2, and 3
- Extremely high forage yield and great quality
- FD 4.3; suitable for 4 to 5-cut systems
- High expression of branch root trait and sunken crown trait
- Exhibits some tolerance of saline soils
- Available with OMRI-approved Seed Coating

CONVENTIONAL VIKING 342LH

GOT LEAFHOPPERS? NO PROBLEM!

- Built-in leaffhopper protection with glandular hairs
- Outstanding yield and forage quality
- Excellent fit in a 3- to 4-cut harvest system
- Available with OMRI-approved seed coating



ORGANIC & NON-GMO ALFALFA SEED

GENERAL & AGRONOMIC INFO

VARIETY	WINTER SURVIVAL INDEX	FALL DORMANCY	NUMBER OF CUTTINGS	TRAFFIC TOLERANCE	POORLY-DRAINED SOILS	DISEASE RATING INDEX
Organic Blue River 444LH UP	1.8	3.9	3-4	4	4	30/30
Organic Blue River 320LH/AP UP	1.9	3.2	3-4	3	5	34/35
Organic Blue River Bluebird	2	5	3-5	4	5	35/35
Organic Blue River 520AP	2	5	4-5	4	4	34/35
Organic Blue River 372HD UP	2	3.6	4-5	3	4	30/30
Organic Blue River 3800 Brand	2.1	4	3-5	4	4	29/30
Organic Blue River 340M	2	3	3-4	3	3	27/30
Organic Matrix Creeping	2	2.5	2-3	5	3	25/30
Organic Hardy Brand	2.2	2	1-2	3	2	11/30
Organic Honest John	2.5	3.5	3-4	3	5	29/30

GENERAL & AGRONOMIC INFO

VARIETY	WINTER SURVIVAL INDEX	FALL DORMANCY	NUMBER OF CUTTINGS	TRAFFIC TOLERANCE	POORLY-DRAINED SOILS	DISEASE RATING INDEX
Conventional Viking 374HD UP	1.7	4	4-5	4	5	35/35
Conventional Viking 394AP	1.8	4.3	4-5	5	5	35/35
Conventional Viking 342LH	1.8	3.9	3-4	4	4	30/30





DISEASE TOLERANCE								
APHANOMYCES RACE 1	APHANOMYCES RACE 2	PHYTOPHTHORA ROOT ROT	VERTICILLIUM WILT	BACTERIAL WILT	FUSARIUM WILT	ANTHRACNOSE	STEM NEMATODE	PEA APHID TOLERANCE
HR	MR	HR	HR	HR	HR	HR	MR	ID
HR	R	HR	HR	HR	HR	HR	MR	HR
HR	HR	HR	HR	HR	HR	HR	MR	R
HR	HR	HR	R	HR	HR	HR	R	HR
HR	S	HR	HR	HR	HR	HR	R	R
R	S	HR	HR	HR	HR	HR	ID	HR
R	S	R	HR	HR	HR	R	ID	R
R	S	R	MR	HR	R	HR	ID	R
S	S	S	S	MR	R	S	ID	ID
HR	S	HR	HR	R	HR	HR	ID	ID

DISEASE TOLERANCE								
APHANOMYCES RACE 1	APHANOMYCES RACE 2	PHYTOPHTHORA ROOT ROT	VERTICILLIUM WILT	BACTERIAL WILT	FUSARIUM WILT	ANTHRACNOSE	STEM NEMATODE	PEA APHID TOLERANCE
HR	HR	HR	HR	HR	HR	HR	ID	ID
HR	HR	HR	HR	HR	HR	HR	ID	ID
HR	MR	HR	HR	HR	HR	HR	MR	ID

Winter Survival Index: 1 superior, 4 adequate; **Fall Dormancy:** growth in inches after final cutting before going dormant; **Traffic Tolerance and Performance on Poorly-Drained Soils:** 5 highest, 1 lowest; **Disease Resistance Index:** 30 highest, 6 lowest; **Disease Tolerance:** HR = Highly Resistant, R = Resistant, MR = Moderately Resistant, LR = Low Resistance, S = Susceptible, ID = Insufficient Data

SEED TREATMENTS

All of our alfalfas may be coated with one of these OMRI-listed inoculants or coatings:

APEX™ GREEN

Encapsulates each seed in a mix of micro-nutrients, including iron, zinc and manganese; and bacteria. The hydrating polymer holds water around seed, improving germination and seedling survival, especially under adverse conditions.

NITRO-COAT™

Contains a multi-strain, crop-specific rhizobium blend to provide maximum nodulation, stand establishment and yield potential. Helps attract soil moisture to the seed, ensuring quick stand establishment.

GRAPH-EX SA™

Contains a specially-formulated blend of Alfalfa/Clover Inoculant plus SabrEx™ Root Inoculant, resulting in better plant stand, bigger root mass, and higher yield.

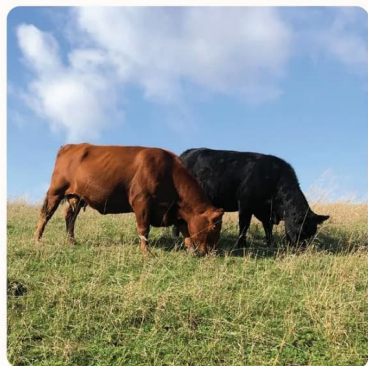
PRE-VAIL™

Clay-based pre-inoculant improves early seedling vigor through increased root development and excellent nodulation for higher yields. Contains high levels of rhizobia for nitrogen fixation – 100 million viable cells per gram – and Azospirillum bacteria to promote plant growth.

NITRAGIN® GOLD

Clay-based pre-inoculant of specially selected natural rhizobia strains result in high levels of nitrogen fixation for maximum yield potential.

DIVERSE SEED FOR YOUR WHOLE ROTATION



Organic Hay and Pasture



Organic Small Grains



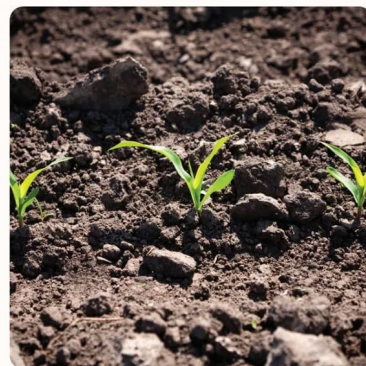
Organic Cover Crops



Organic Clovers



Organic Sorghum Sudangrass



Biologicals

In addition to Blue River organic corn, soybeans and alfalfa, Albert Lea Seed provides an extensive catalog of both organic and conventional non-GMO forages, small grains, and cover crops.

Contact your Blue River dealer or visit [alseed.com](https://www.alseed.com) to learn more.

EARLY PAY DISCOUNT

- 10% if paid by Sept. 30, 2023
- 7% if paid by Nov. 30, 2023
- 5% if paid by Dec. 30, 2023
- 3% if paid by Jan. 30, 2024

Not available with John Deere Financing.
Available on corn, soybeans, and alfalfa seed only.

BOXED CORN AND SOYBEANS

- Seed corn is available in 40-unit (80M/unit) hard-sided pro-boxes or soft-sided tote bags at no additional charge
- Soybeans are available in 40-unit (140M/Unit or 110M/unit) soft-sided tote bags at no additional charge.
- Soybeans are available in 40-unit (140M/unit or 110M/unit) hard-sided pro-boxes for an additional \$3/unit
- Orders for boxes or totes must be placed by Feb. 29, 2024
- Bulk boxes must be returned by June 30, 2024
- Cost of returning boxes is the responsibility of the customer
- \$600 deposit per box invoiced at time of delivery

JOHN DEERE FINANCIAL SPECIAL TERMS

INTEREST RATE	THROUGH	PAYMENT DUE
0% FIXED	DEC. 30, 2023	JAN. 2025
PRIME -3%	JAN. 30, 2024	JAN. 2025
PRIME +3%	SEPT. 30, 2024	JAN. 2025

- Available on corn, soybeans, and alfalfa
- \$2,500 minimum purchase.
- 'Regular' purchase JDF is available on any product with no minimum purchase (special terms do not apply).
- JDF customer service: 1-800-356-9033
- Apply online at:
deere.com/en/finance/financing/multi-use-account

HOW TO ORDER

OUR DEALER NETWORK

We strongly encourage you to place your order through a local dealer because they understand the conditions in your area and what will perform best on your farm. To find a dealer near you, visit alseed.com/blueriver.

REGIONAL SALES MANAGERS

Our regional sales managers are available to help you with hybrid and variety selection, answer your agronomic questions, or connect you with a dealer in your area.



SHIPPING YOUR ORDER

When you place an order through a local dealer, your seed will be shipped to them and they'll work with you to arrange pickup/delivery. However, if you need to have your order shipped directly from us to your farm (anywhere in the US), that can be arranged. Please call us at 800.370.7979.

RETURN POLICY

We can help arrange qualifying returns as noted below, but the costs of the return are the responsibility of the customer.

BEFORE JUNE 15

We will cheerfully accept returns of seed corn, soybeans, and alfalfa until June 15 (or up to 30 days after purchase).

AFTER JUNE 15

There will be a \$10/bag restocking charge on corn and \$3/bag restocking charge on soybeans, alfalfa, and other seeds.

We will not accept returns of:

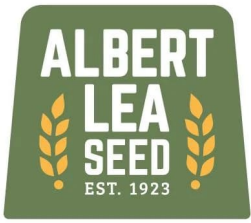
- Value-priced closeout corn hybrids
- Seed corn or soybeans treated with a custom treatment
- Opened, wet, dirty, unsaleable or damaged bags of seed

REPLANT POLICY

If you experience an early-season crop loss in fields planted with seed purchased from us, you may be eligible for replant seed at half-price.

We will provide replant seed of the same species for half of the full retail price or replant seed of a different species for half of the value of the replant or original planted seed (whichever is lower).

We will not warrant alfalfa seed planted between June 1 and August 1, and we do not provide any replant discount for winter-killed seed of any kind.



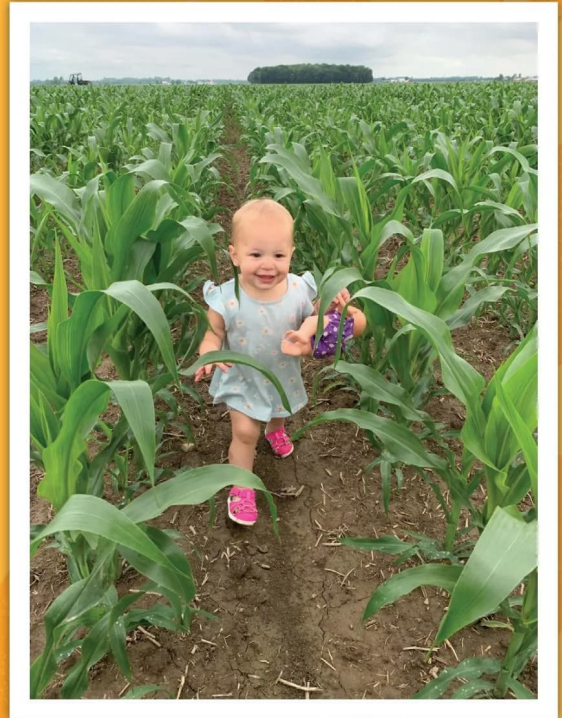
 Printed on 100% recycled paper

ALBERT LEA SEED | 1414 W MAIN ST | PO BOX 127 | ALBERT LEA, MN 56007

NEXTGEN PHOTO CONTEST WINNERS



Hattie Gunnink, daughter of Zach and Manessa Gunnink, in a field of Viking/Blue River O.84-95UP near New Ulm, MN



Layla Ford, daughter of Eric and Laura Ford, in a field of Viking/Blue River O.45-97 near Mauston, WI